



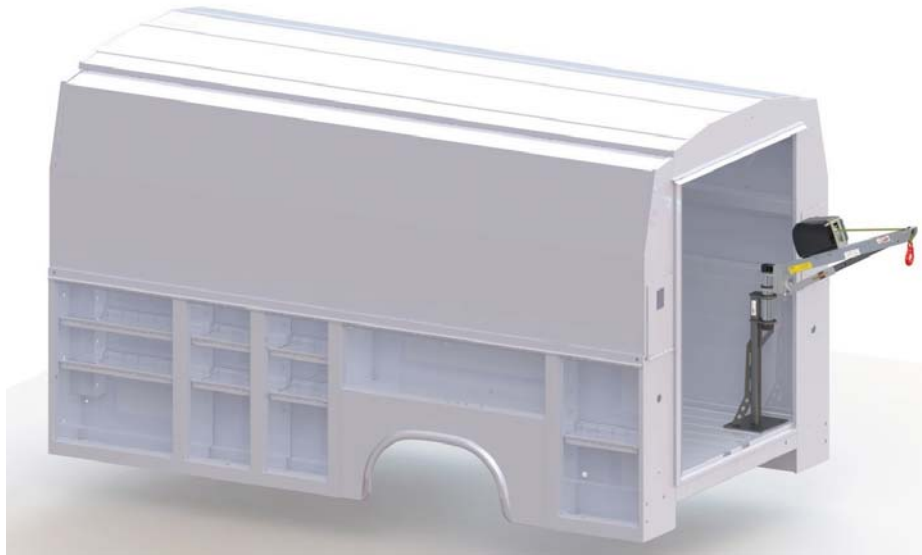
SpitzLift Package Description Document

(Product Cut Sheet/ Install Guide)

PACKAGE DESCRIPTION: HIGH PROFILE ENCLOSED SERVICE BODY FOLD-DOWN SPITZLIFT **MAX LOAD CAPACITY:** 650 LBS / 295 KG

PACKAGE ID #: OPTION 3 - ESB-30 **Right side (Curb Side) Install** **PACKAGE ID #:** OPTION 3 - ESB-30 **Left side (Driver Side) Install**

☐ **VEHICLE SPECIFIC PACKAGE** **VEHICLE MAKE** **VEHICLE MODEL** **START YEAR**



PACKAGE IMAGE

PACKAGE SPECIFICATIONS:

High Profile Enclosed Service Body Fold-Down SpitzLift

Option 3 - ESB-30

Installs on either Left or Right Side

Install Weight: Approx. 89 lbs

Load Capacity: 650 lbs

Includes: 12V DC Fold-Down Crane LTD-3QRT with Pendant, DC Connect & Wiring Harness, 13" Pivot Tube Z-LTPT13,

Pedestal KBPSG-010-030 with Installation Reinforcement Kit KBP-1012H

SHIPPING WEIGHTS:

BOX 1 **LBS**

BOX 2 **LBS**

BOX 3 **LBS**

BOX 4 **LBS**

SPECIAL NOTES:

SPITZLIFT PROPRIETARY DOCUMENT

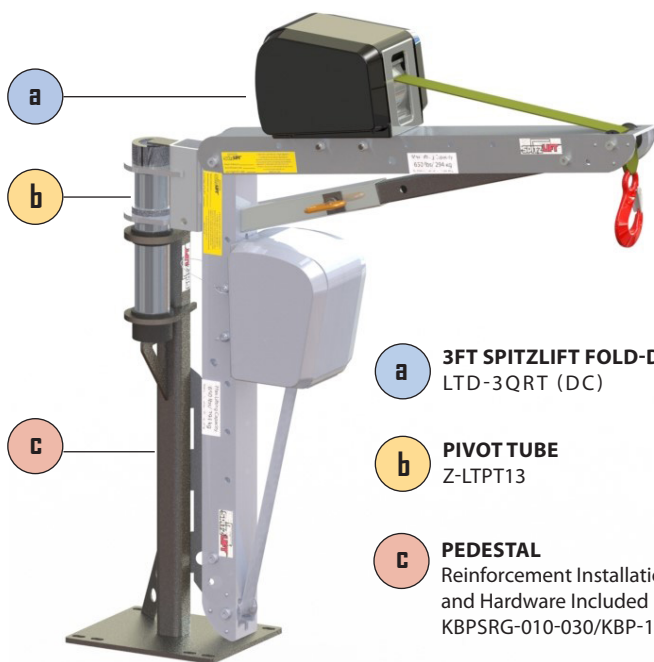
THE INFORMATION CONTAINED IN THIS DOCUMENT IS THE SOLE PROPERTY OF SPITZLIFT. ANY REPRODUCTION IN PART OR AS A WHOLE WITHOUT THE WRITTEN PERMISSION OF SPITZLIFT IS PROHIBITED.

Printed Document is uncontrolled

SL003-PDOCF-REV_A_4.10.2019_ENG

SPITZLIFT ENCLOSED SERVICE BODY PACKAGE: 30" PEDESTAL

RIGHT SIDE (CURB SIDE) | LEFT (DRIVER SIDE) KBPSRG-010-030



- a** 3FT SPITZLIFT FOLD-DOWN CRANE LTD-3QRT (DC)
- b** PIVOT TUBE Z-LTPT13
- c** PEDESTAL Reinforcement Installation Kit and Hardware Included KBPSRG-010-030/KBP-1012H



3 FT SPITZLIFT FOLD-DOWN CRANE - DC POWERED	SPECIFICATIONS
MAX LIFTING CAPACITY	650 LBS (294.8 KG)
MANUFACTURING STANDARDS	COMPLIANT WITH OSHA AND ASME STANDARDS
ROTATION	360°
WEBBING OR WIRE ROPE	20' (609.6 CM) 50' (1524 CM)
LIFTING SPEED	DC - 22'6"(6.858 M)/MIN (0.11/SEC)
DC PENDANT CONTROLLER	10' (304.8 CM)
INSTALLED WEIGHT	DC - APPROX. 89 LBS (40.4 KG)
POWER REQUIREMENTS	12V DC @ 70 AMPS
STANDARD FINISH	CLEAR ANODIZED POWDER COATED
MATERIAL	AIRCRAFT GRADE ALUMINUM & STEEL
WARRANTY	3 YEARS LIMITED



DC Pendant Controller

PART#: 25559-REMOTE10HK
Length: 10' (304.8 CM)



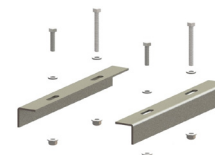
DC Quick Connect

PART#: 24085-4
Length: 4' (121.9 CM)



DC Wiring Harness

PART#: 24049
Length: 25' (762 CM)



Reinforcement Kit

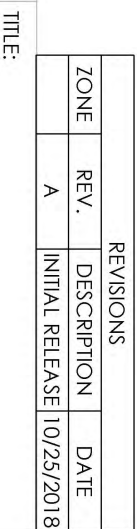
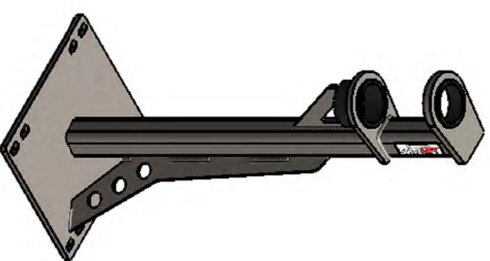
PART#: KBP-1012H

*Manual Handcrank Option available upon request.

Technical drawing of a mechanical part, showing two views: a side view (top) and a front view (bottom).

Side View (Top): Shows a long, tapered shaft with a central hole. The total length is dimensioned as 30.38. The diameter of the shaft is dimensioned as $\phi 4.00$. The shaft is mounted on a bracket with three holes.

Front View (Bottom): Shows the part from the front. The width is dimensioned as 10.00. The view shows the internal structure and the mounting bracket.



MOUNT, 30" REAR GUSSET-1



PROPRIETARY AND CONFIDENTIAL
THE INFORMATION CONTAINED IN THIS
DRAWING IS THE SOLE PROPERTY OF
SPITZLEIT INC. ANY REPRODUCTION IN
PART OR AS A WHOLE WITHOUT THE
WRITTEN PERMISSION OF SPITZLEIT INC IS
PROHIBITED.

	NAME	DATE
DRAWN	SM	10/25/2018
CHECKED	MJS	10/25/2018
ENG APPR	MJS	10/25/2018

[illegible]

SEE NOTES

DO NOT SCALE DRAWING

MATERIAL:

N/A

PROJECT:

KBPSRG-010-030-1

SIZE

DWG. NO.

A

KBPSRG-010-030-1

A

SCALE: 1:12 WEIGHT: 44.43

SHEET 1 OF 1

SPITZLIFT ENCLOSED SERVICE BODY PACKAGE - 30" PEDESTAL

RIGHT SIDE (CURB SIDE) | LEFT SIDE (DRIVER SIDE) KBPSG-010-030

MAX CAPACITY 650 / 295 KG



INSTALLATION GUIDE

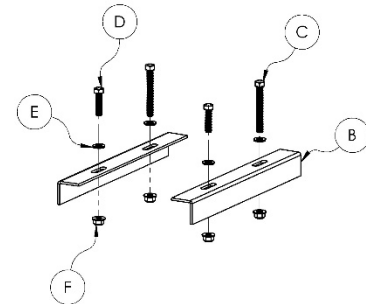
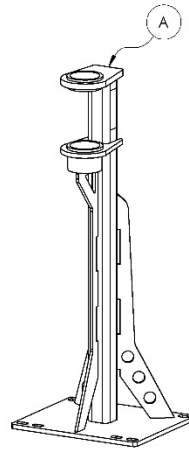
DC OR MANUAL CRANE PEDESTAL INSTALLATIONS

Installation document reflects curb side install.

Can be installed on driver side.



REF	Part Description	Qty
A	KBPSG-010-030	1
B	PLATE, HK BRACKET 10 X 12	2
C	HEX HEAD SCREW, 1/2-13 X 4.0, G5 ZINC	2
D	HEX HEAD SCREW, 1/2-13 X 2.0, G5 ZINC	2
E	WASHER, 1/2" SEALING NEOPRENE, GALV	4
F	FLANGED HEX NUT, 1/2-13 NYLOC, ZINC	4



DISCLAIMER: It is recommended that SpitzLift pedestals be professionally installed. SpitzLift is not responsible for the structural integrity of the mounting structure.

CAUTION: Ensure that the location for the pedestal is clear of all wires, harnesses, lines, fuel tank, etc.

Step 1.

- Place pedestal into position approximately 1/2" from inside wall and 1 5/8" from rear interior wall. Use the existing holes on the pedestal to mark hole locations to be drilled through the bed (**fig I**).
- Remove the pedestal and drill 17/32"(.53) hole at each marked location (**fig II-1**).

Note: All drilled holes must be properly sealed by liberally applying high grade silicone or other sealant around the perimeter of all holes. If silicone is applied properly, silicone will squeeze out. Remove excess silicone after completion of installation.

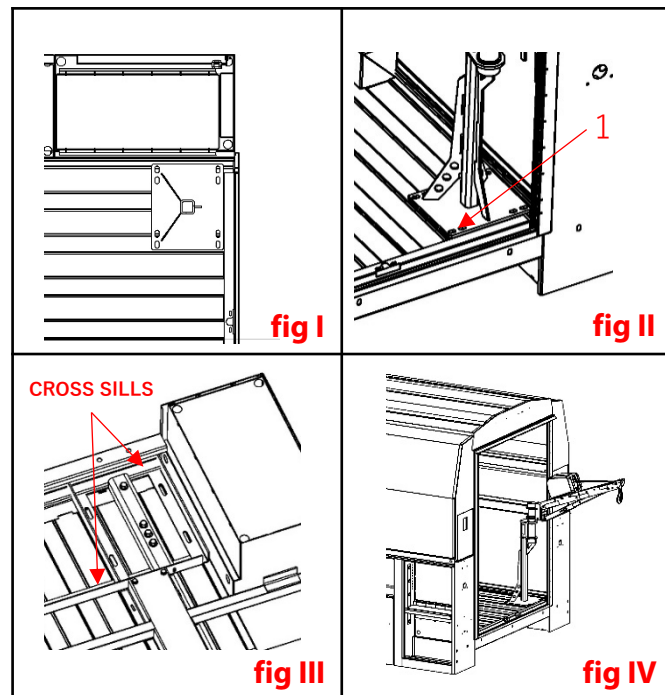
Step 2.

- Based on OEM design, it may be necessary to cut two 2"x2" steel angles (**item B**) to fit between the 2 cross sills (**fig III**).
- Align the steel angles supports to match pedestal hole locations to the underbody of the platform.
- Insert the 1/2" bolts (**item C & D**) down through the pedestal, floor, and the cross sills or channel.
- Fasten with 1/2" nuts (**item F**).
- Once all 4 bolts are in place with hardware washers, and nuts torque bolts to 75 ft-lbs.

Note: Installer may consider welding the 2 angle pieces on to the cross sills with 1/8" x 2" welds. However, this step is not required for most applications.

Step 3.

- When pedestal has been successfully attached to the vehicle, ensure that everything is structurally sound. Confirm that all cracks and holes are properly sealed with silicone.
- Insert the Post Mast into the pedestal. Assemble crane according to operations manual (**fig IV**).



SPITZLIFT ENCLOSED SERVICE BODY PACKAGE - 30" PEDESTAL

RIGHT SIDE (CURB SIDE) | LEFT SIDE (DRIVER SIDE) KBPSG-010-030

MAX CAPACITY 650 / 295 KG



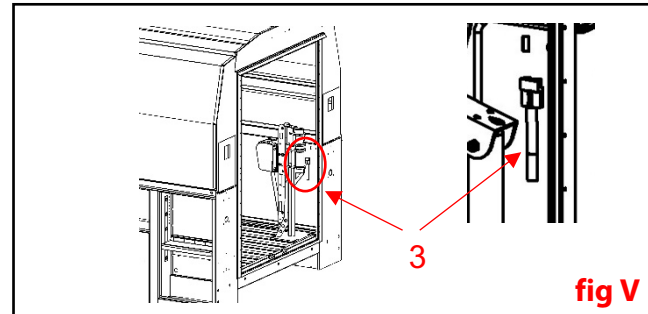
Step 5. SpitzLift Automotive Grade Wiring Harness Installation (For DC powered installations, supplied with SpitzLift DC cranes)

DC Wiring Harness components (**SpitzLift PN#24049**)

- 25 ft. power cable, 8 ft. ground cable
- #8 wire (600v rating UL Type MTW VW-1)
- 70amp (2 qty 35amp) circuit breakers (avg. current draw 50amps)
- Anderson (SB-50) connector



- Run wiring harness along the chassis of the vehicle. Make certain that both lead wires are properly attached along chassis without sagging and are secured from being pinched.
- Use rubber grommets on any hole penetrations. Ensure that the cable does not contact any heat sources that could cause damage.
- Attach 8 ft. ground lead to chassis. Ensure ground connection is to bare metal, paint, or seal connection after termination
- Run positive 25 ft. lead, which includes automatic circuit breakers, and terminate to positive battery connector or to auxiliary lug.
- Position power supply connector for plugging the SpitzLift extension power cord (4 ft. standard length **SpitzLift PN#24085-4**) onto the side wall in a location that is unobstructed within 2' of the SpitzLift power unit (**fig V-3**).



Step 6.

Insert SpitzLift into the pedestal and perform recommended load test. 125% of max capacity.

Step 7. (Securing crane for travel)

- Crane must face to the front of vehicle to reduce wind chatter.
- Utilize or install a tie down for locking crane into travel position (**fig V**).
- Fasten the hook to the tie down, Reel in the strap to add enough tension to secure the crane. The crane will flex about an inch, indicating that it is secure.
- Then, disconnect the power supply for transport and when crane is not in use.

Note: If crane continues to chatter, tighten the strap a little more. Caution - do not over tighten.

Step 8.

Unplug power cord for travel and when crane is not in use.